

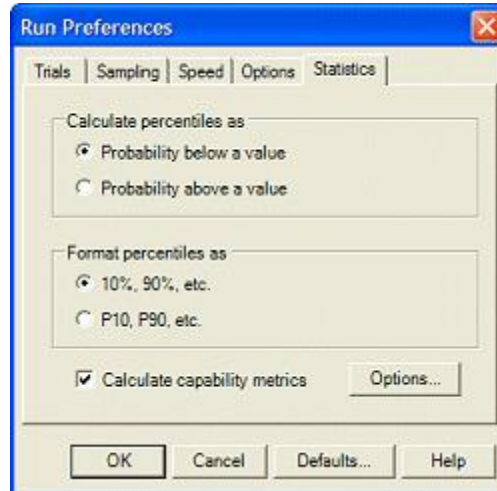
Crystal Ball Software and Risk Analysis Tips

Activating Process Capability Features and Split-view Charting

The latest Crystal Ball release, version 7.2, introduces process capability features, so you can view descriptive statistics and capability metrics without ever having to leave Crystal Ball.

To activate Crystal Ball's process capability features:

1. Choose Run > Run Preferences to display the Run Preferences dialog.
2. Click the Statistics tab.
3. Check Calculate Capability Metrics.
4. Click the Options button to set the capability calculation options, described in the next section.
5. Click OK when setting changes are complete.



You can also activate the process capability features by selecting Quality as the primary application type on the new Welcome screen.

Activating the process capability features also activates new charting capabilities, called Split View. Split view lets you see multiple chart and statistics views in the same forecast window. You can view: Frequency, Cumulative Frequency, Reverse Cumulative Frequency, Statistics, Percentiles and Capability Metrics at the same time (or any combination thereof).

For more information or to contact us, browse to <http://helpdesk.crystalball.com>

This tip published November 2005 (Crystal Ball version 7.2)

ORACLE